

Clef Studio Help Index

- [1. OverView](#)
- [2. The Power Bar Module](#)
- [3. The Wave Play Module](#)
- [4. The MIDI Play Module](#)
- [5. The Clef Studio PlayLists](#)

Overview of Clef Studio

Clef Studio is an integrate suit of programs that gives you complete control of your PC's sound hardware. Because it uses a intuitive "home stereo component system" interface, Clef Studio makes it easy and fun to work with sound on your PC. In this suit, There are three modules:

1. Power Bar Module

---- Launches or closes each of the other modules. When you close a module, it is removed from the screen. You also use this power Bar to quit Clef Studio or to activate Help.

2. Wave Play Module

---- Play and record .Wav files using the Clinton sound card, but it can't play a compress wave file.

3. Midi Play Module

---- Play MIDI files using the Clinton sound card's built-in FM synthesizer.

The Power Bar Module



The Power Bar Module has several functions. It lets you:

- . Open or close any of the other Clef Studio modules
- . Determine the arrangement in which the modules are displayed
- . Access Clef Studio's on-line Help system
- . Quit Clef Studio

To open or close a module

1. Click on the appropriate icon button on the Power Bar.
2. Once a module is opened, you can click on its icon again in the Power Bar to close it.

When you open a module, it will always be inserted below the modules that currently open. Thus, you can control the arrangement of Clef Studio's modules simply by varying the order in which you open them. The current module arrangement is saved whenever you quit Clef Studio.

To arrange the Clef Studio modules

1. From the Power Bar, close all opened modules by clicking on their icons.
2. Arrange the modules by clicking on their icons in the order in which you want them to appear, from top to bottom.

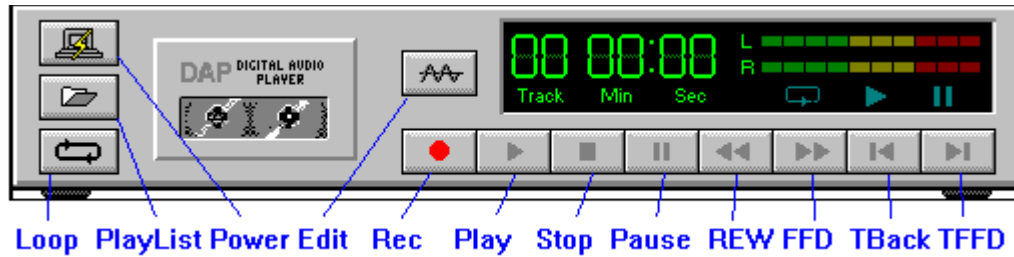
To quit the Clef Studio

1. From the Power Bar, click on the Power button.

To access Clef Studio's on-line Help

1. From the Power Bar, click on the Help(?) button.

The Wave Play Module



The Digital Audio Play(DAP) Module allows you to play and record digital audio files in the .WAV file format, and they should not be compressed file. Like the other Clef Studio modules, it features a "home stereo component" interface with familiar transport controls, and lets you access a playlist for playing groups of digital audio files. From the DAP Module, you can also launch a full-featured digital audioeditor called WaveEditor.

When you click on the Play transport button, the DAP Module will play the files in the playlistsequentially. You can use the Next File and Previous File buttons to scroll through the playlist. The current file number in the playlist is displayed in the Display Area.

When Playing or Recording a file with DAP Module

1. An animated tape movement is displayed to indicate transport activity.
2. The VU Meters show the record or playback level.
3. The elapsed time of the file is displayed by the MIN:SEC indicator.

Control Buttons

1. Power ---- Closes the DAP module.
2. PlayList ---- Activates the DAP Module's PlayList window.
3. Loop ---- Loop play the files in playlist.
4. Edit ---- Lunched WaveEditor with the current file loaded. You access WAVEEditor to edit the current digital audio file, set the Record paremeters for DAP Module, or save the file you have recorded with the DAP Module.

Transport Controls

The DAP Module's transport controls are modeled those found on a standard home CD player. The controls are: Record, Play, Stop, Pause, Rewindw(REW), Fast Forward(FFD), Previous File(TBack) and the Next File(TFFD).

Display Area

- .. TrackNumber ---- Display the current file number in the playlist.

.. Play/Pause Indicator ---- These indicators light up when DAP module is in play or pause mode.

.. Min:Sec ---- Display the amount of elapsed time from the beginning of the current file.

.. VU Meters ---- These bar-graph meters display the digital audio playback or record levels in real time.

The Midi Play Module



The MIDI Module allows you to play back MIDI files using the Clinton card's built-in FM synthesizer and/or its optional MIDI connector. It supports MIDI files in the standard .MID format.

Like other Clef Studio modules, The MIDI Module use a "home stereo component" interface with familiar transport controls, and lets you access a playlist for playing groups of files.

When you click on the Play transport button, the MIDI module will play the MIDI files in the playlist sequentially. You can use the Next File and Previous File buttons to scroll through the playlist. The current file number in the playlist is displayed in the Display Area.

When a MIDI file is playing, the green light on the MIDI Module's diskdrive flashes to indicate transport activity, and the elapsed time of the file is displayed byMIN:SEC indicator.

Control Buttons

1. Power ---- Closes the DAP module.
2. PlayList -- Activates the DAP Module's PlayList window.
3. Loop ---- Loop play the files in playlist.
4. Edit ---- Lunched WaveEditor with the current file loaded. You access WAVEEditor to edit the current digital audio file, set the Record parameters for DAP Module, or save the file you have recorded with the DAP Module.

Transport Controls

The DAP Module's transport controls are modeled those found on a standard home CD player. The controls are: Record, Play, Stop, Pause, Rewind(REW), Fast Forward(FFD), Previous File(TBack) and the Next File(TFFD).

Display Area

- .. TrackNumber ---- Display the current file number in the playlist.
- .. Play/Pause Indicator ---- These indicators light up when DAP module is in play or pause mode.
- .. Min:Sec ---- Display the amount of elapsed time from the beginning of the current file.

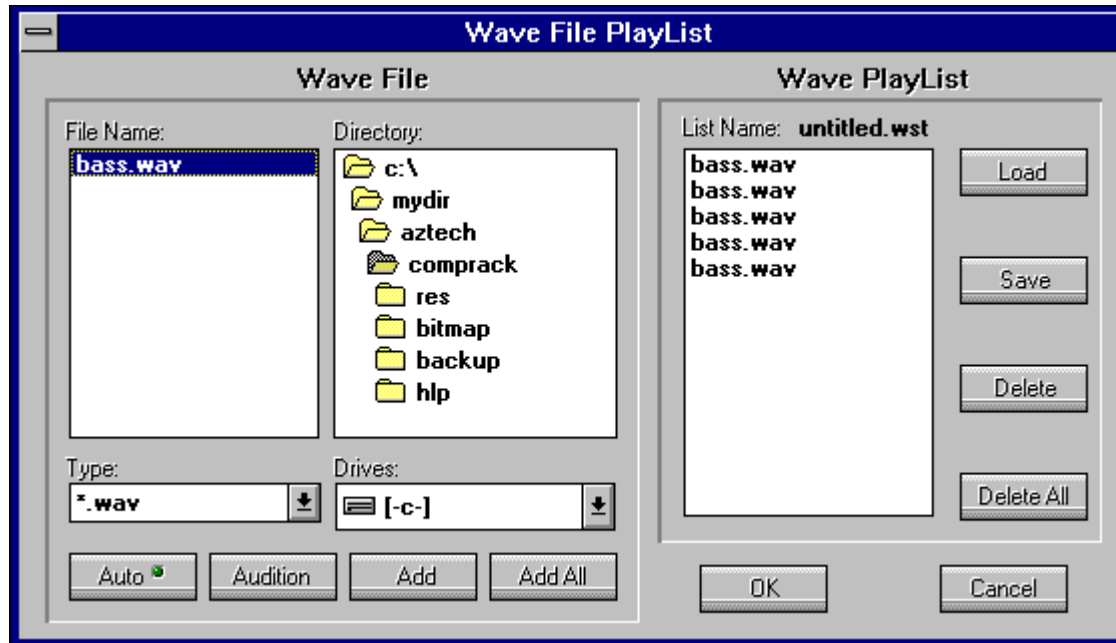
The Clef Studio PlayLists

One of the Clef Studio's most useful features is its ability to create and use playlists for digital audio, MIDI playback. You simply choose the selections you want to hear, and the Clef Studio module will play them back in the order you have arranged. As you browse through digital audio or MIDI files, you can audition them to help identify them before you add them to the playlist. Once you have create a playlist, you can save for later use.

1. Wave File Playlist

2. Midi File Playlist

The Wave File Playlist



1. Creating a DAP playlist

Creating a playlist is rather straightforward. On the left side of the playlist window is an area from which you can browse through wave files. You create your list by adding the desired files to the playlist box on the right.

The wave files you select are always added to the playlist box directly above currently-highlighted. As items are added, the highlight is always pushed down to the end of the list. Once you have created a playlist, you can switch back to the appropriate Clef Studio to play it back.

2. How to Create a DAP playlist

1. Click on the Playlist button located on the left side of the DAP module. The appropriate playlist window will appear.
 2. If you are creating a DAP playlist, choose the desired file extension from the Type list box.
 3. Use the Drive and Directory list boxes, navigate to the drive and directory where the desired file is located. Any files in the current directory with the matching extension will be listed in the Name list box.
 4. From the Name list box, double click on any file name to add it to the playlist.
- ... To add a group of sequential names to the playlist from files list box, click and drag your mouse to highlight the desired file names, then click on the "Add" button.
- ... To add all the file names in the File list box to Playlist, Click on the "Add All" button.

5. To remove one or more files from the playlist, highlight the desired file name or names in the playlist box use the methods outlined above, then click on the "Delete" button. To remove all the files from the playlist, click on the "DeleteAll" button.
6. Continue the above steps as needed to complete your playlist.
7. When you complete your playlist, click on the "OK" button to return to Clef Studio module.
8. To play all the files in your playlist, one after the other, click on the "Play" button.
9. To play the previous file or next file in the playlist, click on the "Previous" File button or "Next" File button.
10. To halt the playback of the playlist, click on the "Stop" button.

Audition Files from the playlist

In many cases, you will want to audition a digital audio file to make sure it's the right one before adding it to your playlist. You can use one of two different methods to preview files right from the playlist window: Use the "Audition" button if you just need to audition a single file, enable Auto audition if you want to audition a number of files.

3. Saving a DAP playlist

Once you have created a playlist, you can save it to use for future Clef Studio sessions.

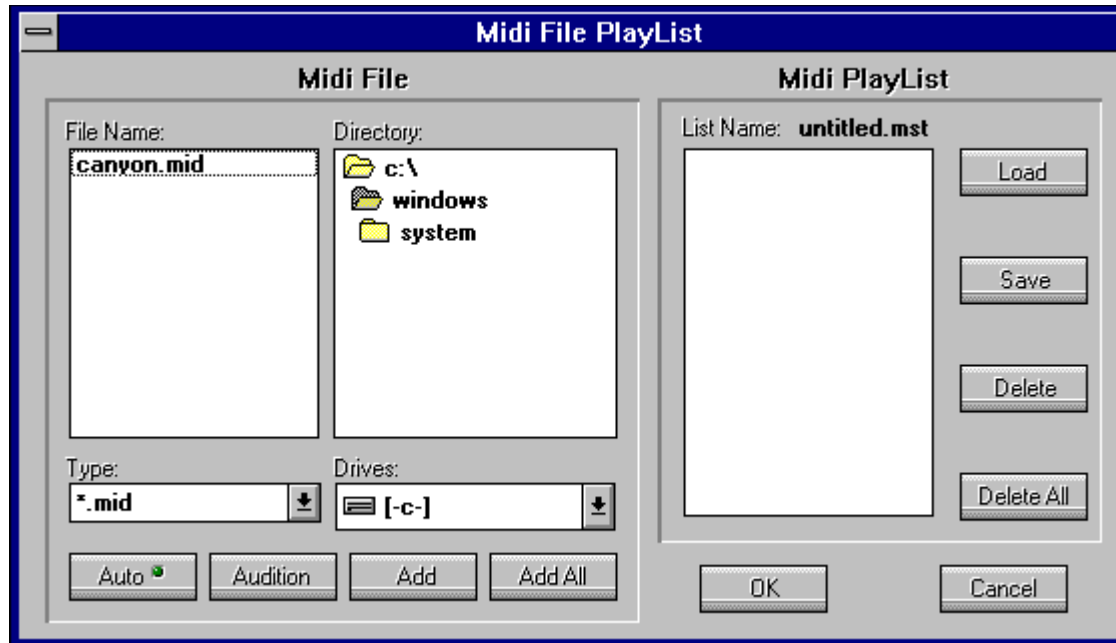
1. If necessary, click on the DAP module's Playlist button to access the appropriate playlist window.
2. From the playlist window, click on Save button, the save playlist file dialog box will appear.
3. From the Save playlist File dialog box, navigate to the desired Drive and directory, and enter a valid DOS file name for the playlist.
4. Click on OK button to save the playlist.

4. Loading a DAP playlist

Once a DAP playlist has been saved, you can load and use it with Clef Studio at any time.

1. If necessary, click on the DAP module's Playlist button to access the appropriate playlist window.
2. From the playlist window, click on Load button, the load playlist file dialog box will appear.
3. From the Save playlist File dialog box, navigate to the desired Drive and directory, and enter a valid playlist file name or Double-click on the desired playlist file name.
4. Click on OK button to load the playlist.

The Midi File Playlist



1. Creating a Midi playlist

Creating a playlist is rather straightforward. On the left side of the playlist window is an area from which you can browse through midi files. You create your list by adding the desired files to the playlist box on the right.

The midi files you select are always added to the playlist box directly above currently-highlighted. As items are added, the highlight is always pushed down to the end of the list. Once you have created a playlist, you can switch back to the appropriate Clef Studio to play it back.

2. How to Create a Midi playlist

1. Click on the Playlist button located on the left side of the Midi module. The appropriate playlist window will appear.
 2. If you are creating a midi playlist, choose the desired file extension from the Type list box.
 3. Use the Drive and Directory list boxes, navigate to the drive and directory where the desired file is located. Any files in the current directory with the matching extension will be listed in the Name list box.
 4. From the Name list box, double click on any file name to add it to the playlist.
- ... To add a group of sequential names to the playlist from the files list box, click and drag your mouse to highlight the desired file names, then click on the "Add" button.
- ... To add all the file names in the File list box to the Playlist, Click on the "Add All" button.

5. To remove one or more files from the playlist, highlight the desired file name or names in the playlist box use the methods outlined above, then click on the "Delete" button. To remove all the files from the playlist, click on the "DeleteAll" button.
6. Continue the above steps as needed to complete your playlist.
7. When you complete your playlist, click on the "OK" button to return to Clef Studio module.
8. To play all the files in your playlist, one after the other, click on the "Play" button.
9. To play the previous file or next file in the playlist, click on the "Previous" File button or "Next" File button.
10. To halt the playback of the playlist, click on the "Stop" button.

Audition Files from the playlist

In many cases, you will want to audition a digital audio file to make sure it's the right one before adding it to your playlist. You can use one of two different methods to preview files right from the playlist window: Use the "Audition" button if you just need to audition a single file, enable Auto audition if you want to audition a number of files.

3. Saving a Midi playlist

Once you have created a playlist, you can save it to use for future Clef Studio sessions.

1. If necessary, click on the Midi module's Playlist button to access the appropriate playlist window.
2. From the playlist window, click on Save button, the save playlist file dialog box will appear.
3. From the Save playlist File dialog box, navigate to the desired Drive and directory, and enter a valid DOS file name for the playlist.
4. Click on OK button to save the playlist.

4. Loading a Midi playlist

Once a DAP playlist has been saved, you can load and use it with Clef Studio at any time.

1. If necessary, click on the Midi module's Playlist button to access the appropriate playlist window.
2. From the playlist window, click on Load button, the load playlist file dialog box will appear.
3. From the Save playlist File dialog box, navigate to the desired Drive and directory, and enter a valid playlist file name or Double-click on the desired playlist file name.
4. Click on OK button to load the playlist.

